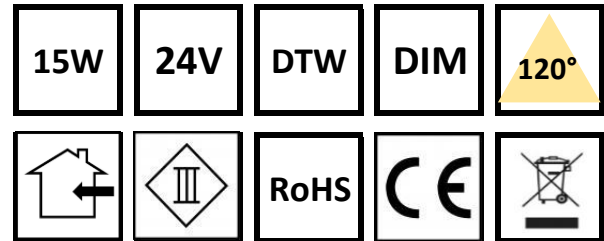


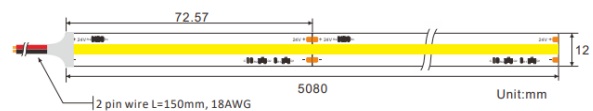
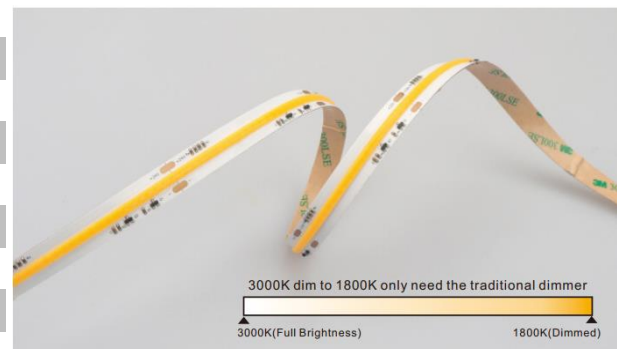
Description

LED-Strip COB Dim To Warm

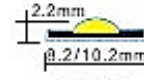


Technical Specifications

LED power (W)	15W/meter
Mounting	White PCB 12mm
Lumen output (Lm)	1005Lm/m (15W)
Lumen Efficientie	75Lm/W (3000K)
CCT (K) Dual color	3000K...to...1800K
Beam angle (°)	120°
Energy class	F
CRI	>90
Power factor	> 0,9
Inpute Voltage(Vac)	24VDC
Current (A/m)	0,83A(24V)
Standby power (W)	0
Cutttable	72,6mm
LED type	COB
Number of LEDs/meter	588pcs
IP Factor	20
Dimmable	PWM Controlled
Working Temperature	-20° +50°
Lifetime	50.000Hrs
LB-Standard	L70B10 (55°C)
Warranty: 5 years	indoor use only
Dimensions Lxbxh (mm)	5000x12x1,5mm
Packing	Rol=5m



IP20
5 years



IP65H
3 years



10/2024

Also available:
IP65H

Artikel no.
0316-015-DTW

Durable – Delightfull – LED